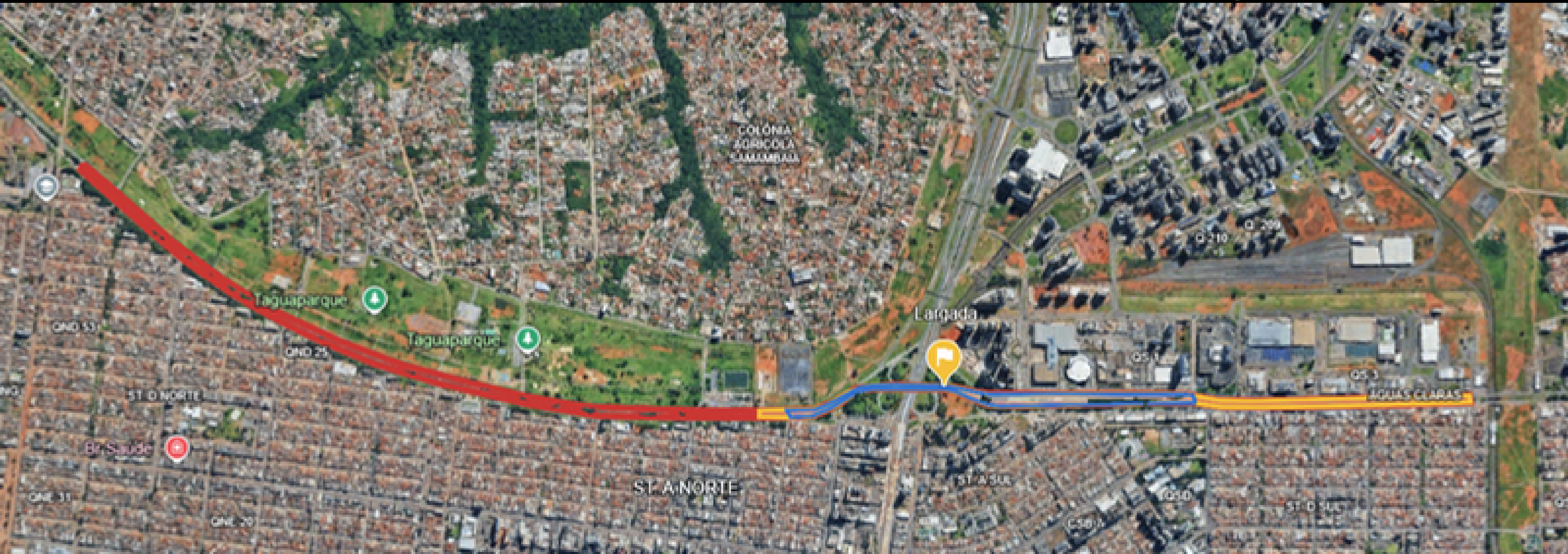
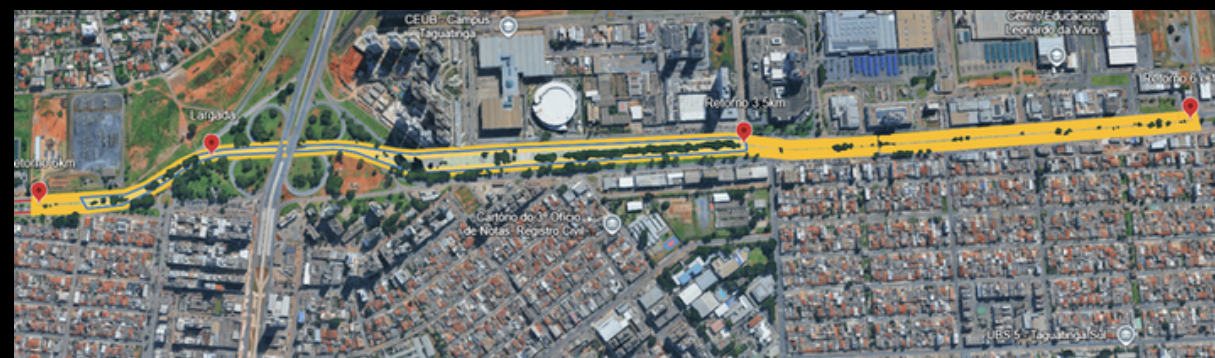


Percurso - Sesc+Corridas - Etapa Taguatinga



PERCURSO 3km



PERCURSO 6km



PERCURSO 12km

Largada 3km,
6km e 12km

Arena

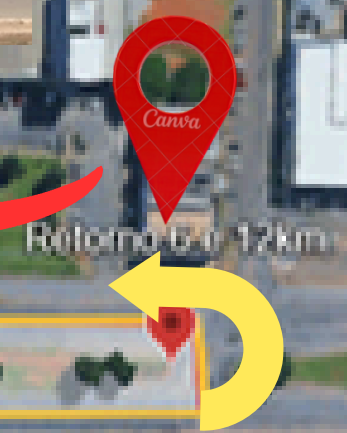




Via compartilhada

Retorno 6km e
12km

Estação do metrô



PERCURSO BESC-CORRIDAS- ETAPA TAGUATINGA







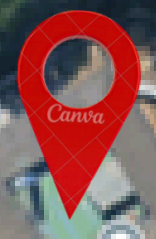
Via compartilhada

Retorno 6km

Retorno 3km

Retorno 12km

Retorno 12km



CEI 02 de Taguatinga

Clínica Medicina
005560 - Exame

An aerial photograph of a highway interchange with several roundabouts. A multi-colored line (red, yellow, blue) is overlaid on the road surface, indicating a planned route or construction path. Yellow arrows labeled 'Caminho' point in the direction of travel along this path. Orange traffic cones are placed at various points along the path and at the roundabouts. The word 'Arena' is written in yellow in the lower right quadrant. The text 'Chegada 3km, 6km e 12km' is written in large yellow letters in the upper center.

**Chegada 3km, 6km
e 12km**

Arena